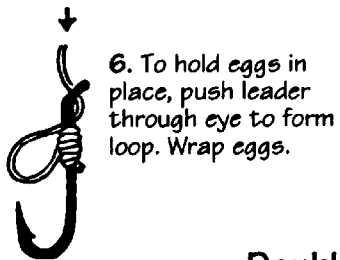
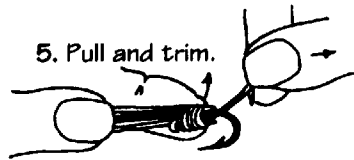
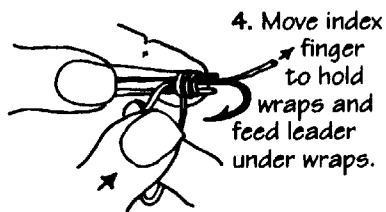
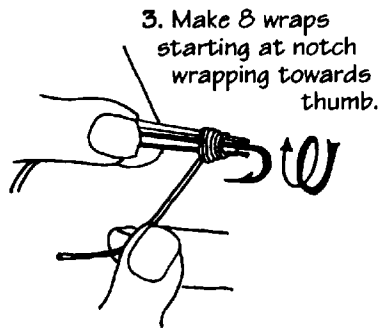
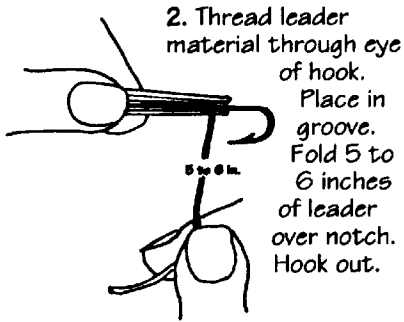


Open Your Nip 'N Knot™

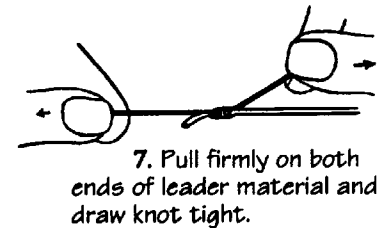
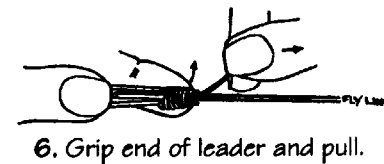
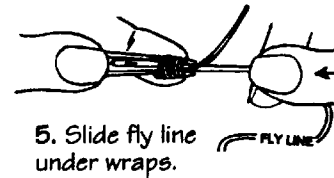
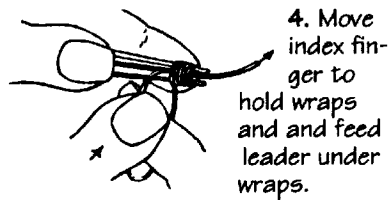
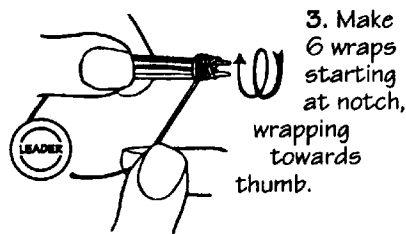
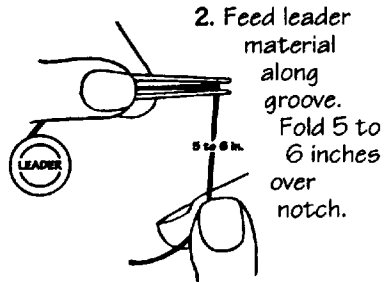


1. Open Nip 'N Knot. Hold in left hand (if you are right handed). Deep groove up.

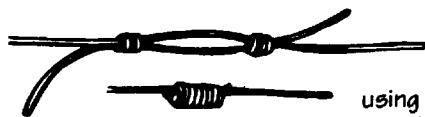
Hook Snell (also egg snell)



Nail Knot



Double Nail Knot



Leader to tippet: The double nail knot is made in two parts. First, tie one section of leader to a second using the same directions as in the Nail Knot above; second, reverse the materials and repeat. Moisten and slowly draw both ends tight.